



Sliding Doors

Tailor-made solutions
for optimal operating processes.

Proven in countless applications, the Cool-Tek sliding door delivers continuous reliability and first-class performance.

The Cool-Tek sliding door stands out by its versatile customization options.

A variety of frame designs and surface finishes,

along with individual features such as single- or double-leaf configurations and door leaf thicknesses from 3" to 8", offer maximum flexibility. All sliding doors come with a built-in automation interface and can be upgraded to a fully automatic door at any time.

Service room sliding door SS 80

Space-saving room partitioning in operating rooms

Manual Sliding Doors

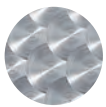


Cool-Tek hygiene runner LS 3000 - The original

- Continuous hygiene runner rail made of polished stainless steel
- Easy to clean
- Smooth running
- Convenient to operate

Optics

- Cool-Tek stainless steel surfaces*



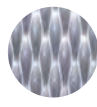
circle matted



mill finished



grounded



SM linen

- Strip galvanized, painted according to RAL color table* with polyester coating



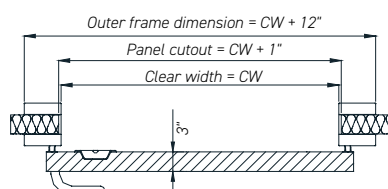
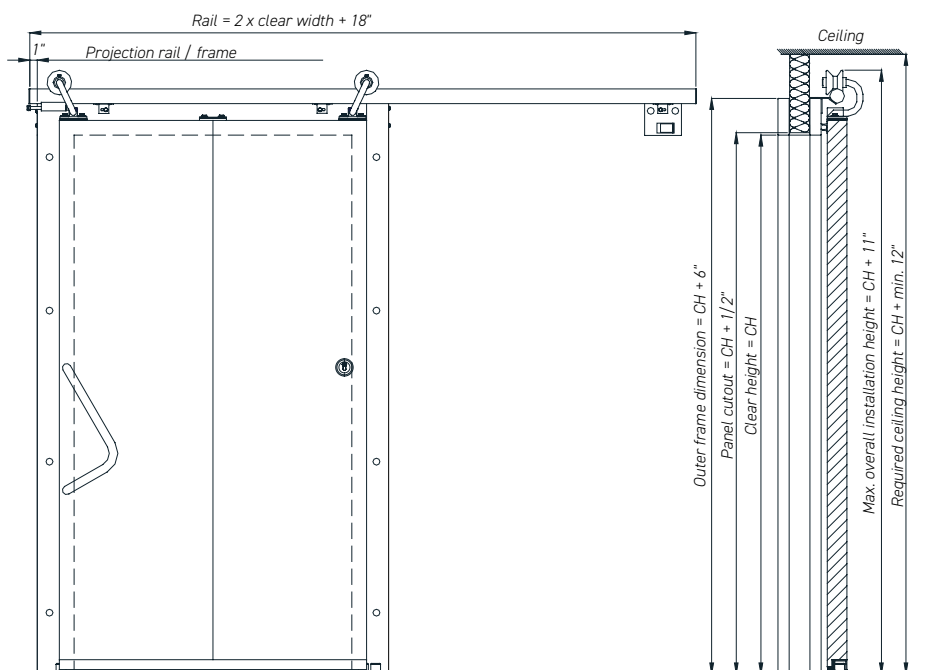
* Other surfaces and colors on request.

Convincing safety

- Secure locking with bolt closure

Optional design

- Double-leaf design allows quick and complete opening, even for larger door openings
- Integrated escape door in the door leaf
- Available with windows in various sizes and shapes (rectangular or round)





SS 80

Manual Sliding Doors

Application

Service rooms

Dimensions in inch

1-FLG Max. Width
Max. Height

8' 2 1/2"

9' 10"

2-FLG Max. Width
Max. Height

16' 5"

16' 5"

Other formats available on request.

Sheet thickness

3"

Temperature range

Heating

Model

Stainless steel

Stainless steel V2A (1.4301), V4A (1.4404) to EN 10088-2
Circular matted finish, grounded, SM linen, mill finished (2B)

Galvanized sheet steel

Strip galvanized, quality class Z275,
corrosion protection class III according to DIN EN 10169/10143,
polyester coating 25µm
Industrial colors according to Cool-Tek color table

Suspension

Hygienic tube track, polished,
stainless steel V2A roller holder

Windows with stainless steel glazing beads

VSG or polycarbonate, rectangular
VSG or polycarbonate, round

Seals

Side seal

EPDM

Bottom seal

-

Fittings

Stainless steel tubular handle
Cool-Tek stainless steel lever handle 2013/2020

Options Door leaf / Frame

Bolt locking, Impact protection

Frame

Technical details

Installation blockwork

Flat frame 6" x 2" (bracket mounting)

-

Flat frame 6" x 2" (with pocket holes)

Fig. 1.1

Installation panels

Clamp frame installation

Fig. 1.3

Threshold

-

Technical details

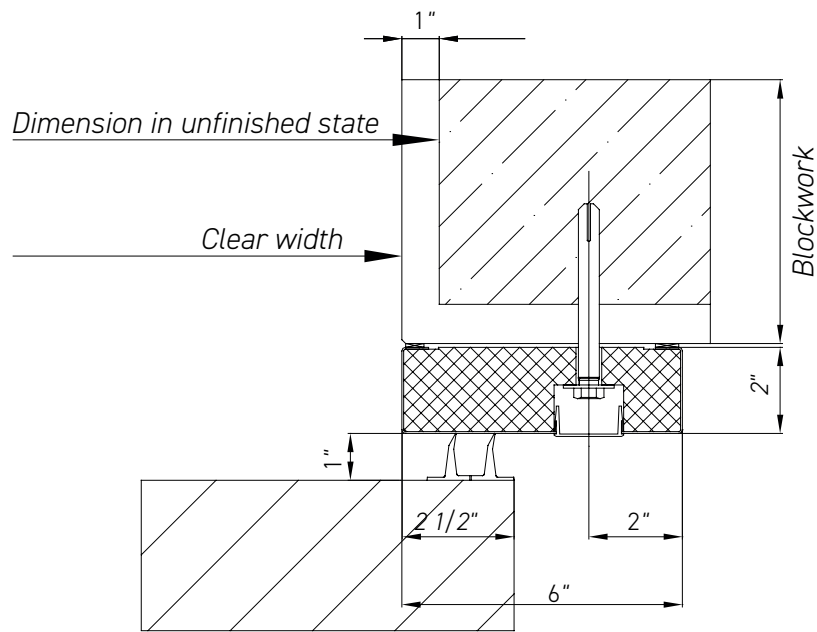


Fig. 1.1 Blockwork / Flat frame with pocket holes

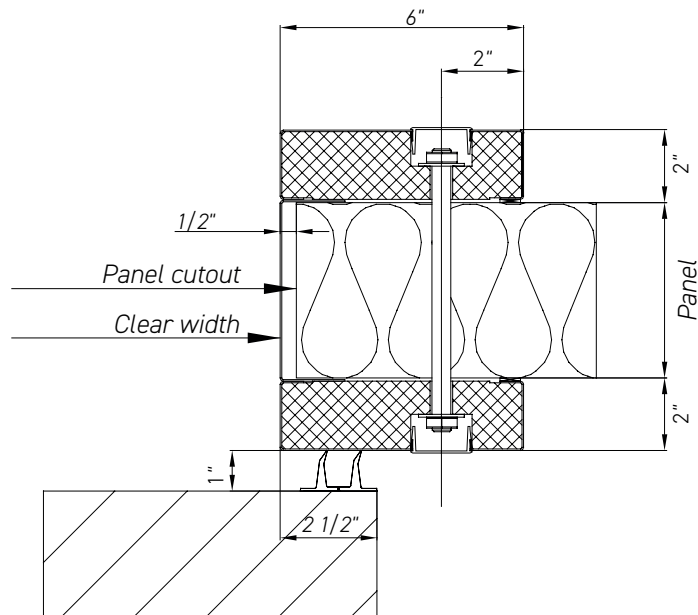


Fig. 1.3 Panel / Clamp frame

Cold room sliding door CS 80|100

Highest industrial insulation properties

Manual Sliding Doors

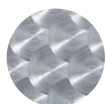


Cool-Tek hygiene runner LS 3000 - The original

- Full-length hygienic runner rail made of polished stainless steel
- Integrated lowered sections for a complete seal to the floor and frame
- Easy to clean
- Smooth running
- Convenient to operate

Optics

- Cool-Tek stainless steel surfaces*



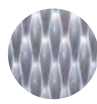
circle matted



mill finished



grounded



SM linen

- Strip galvanized, painted according to RAL color table* with polyester coating



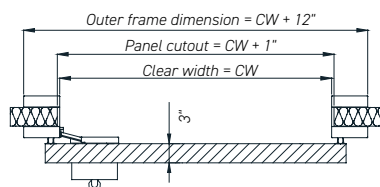
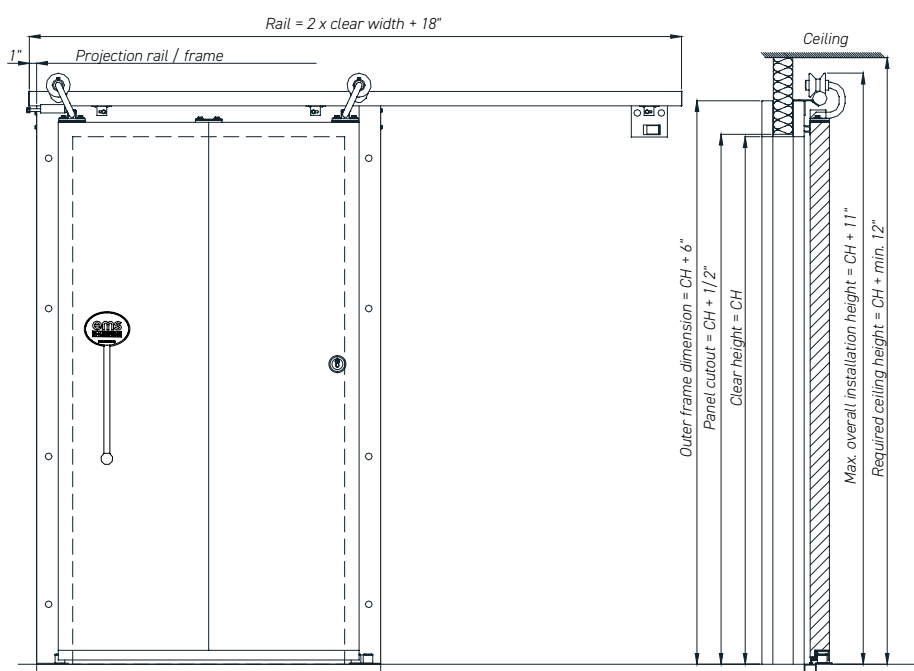
* Other surfaces and colors on request.

Convincing safety

- Secure locking with bolt closure

Optional design

- Double-leaf design allows quick and complete opening, even for larger door openings
- Integrated escape door in the door leaf
- Available with windows in various sizes and shapes
- With pipe path passage





Manual Sliding Doors

CS 80 / CS 100

Application

Cold storage rooms

Dimensions in inch

1-FLG Max. Width
Max. Height

19' 8" / 19' 8"
19' 8" / 19' 8"

2-FLG Max. Width
Max. Height

26' 3" / 26' 3"
19' 8" / 19' 8"

Other formats available on request.

Sheet thickness

3" / 4"

Temperature range

Normal temperature up to 33.8°F

Heating

Model

Stainless steel

Stainless steel V2A (1.4301), V4A (1.4404) to EN 10088-2
Circular matted finish, grounded, SM linen, mill finished (2B)

Galvanized sheet steel

Strip galvanized, quality class Z275,
corrosion protection class III according to DIN EN 10169/10143,
polyester coating 25µm
Industrial colors according to Cool-Tek color table

Suspension

Hygienic tube track, polished,
stainless steel V2A roller holder

Windows with stainless steel glazing beads

VSG or polycarbonate, rectangular
VSG or polycarbonate, round

Seals

Side seal

EPDM

Bottom seal

TPE teflon-coated

Fittings

Cool-Tek stainless steel lever handle 2013/2020

Options Door leaf / Frame

Bolt locking, Impact protection
Pipe path passage
Cold interrupter

Frame

Technical details

Installation blockwork

Flat frame 6" x 2" (bracket mounting)

Fig. 1.2

Flat frame 6" x 2" (with pocket holes)

Fig. 1.1

Installation panels

Clamp frame installation

Fig. 1.3

Threshold

Fig. 1.4 / Fig. 1.5

Technical details

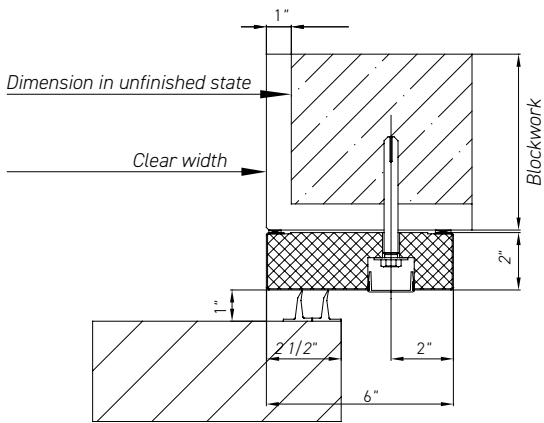


Fig. 1.1 Blockwork / Flat frame with pocket holes

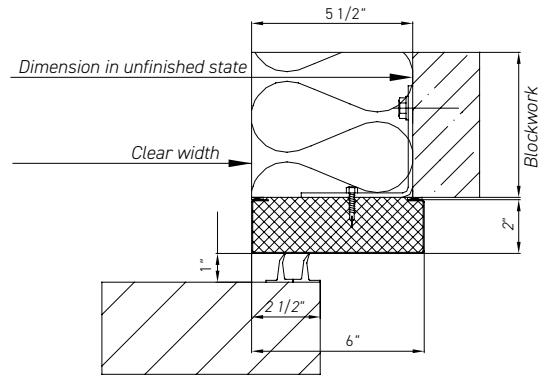


Fig. 1.2 Blockwork / Flat frame, bracket mounting

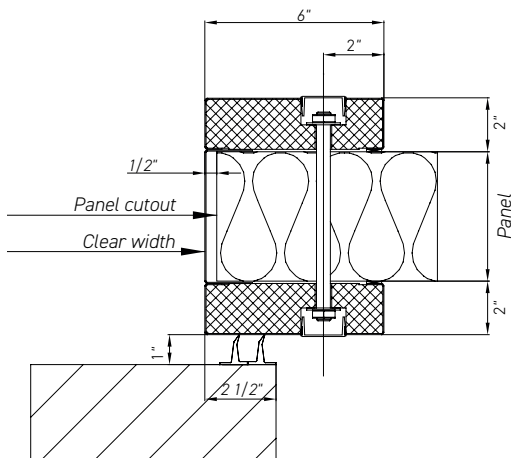


Fig. 1.3 Panel / Clamp frame

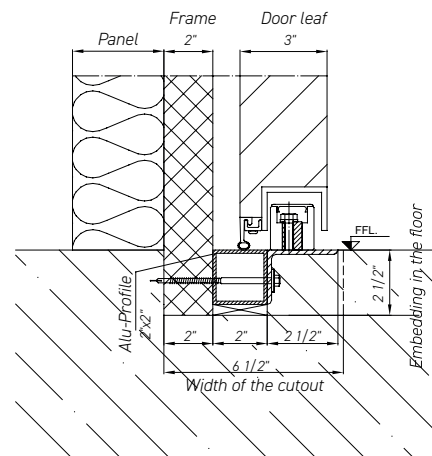


Fig. 1.4 Threshold installation CS 80

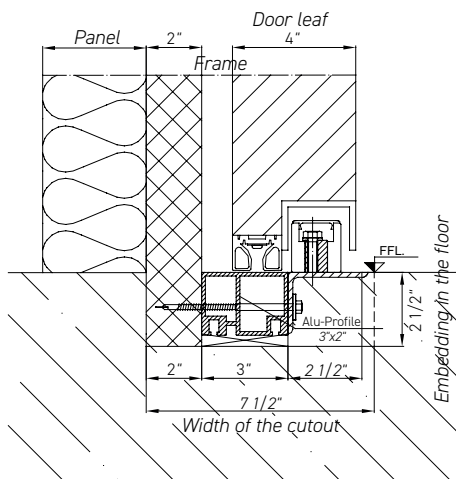


Fig. 1.5 Threshold installation CS 100

Freezer room sliding door FS 120|140

Manual Sliding Doors



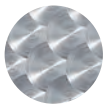
Highest industrial insulation properties

Cool-Tek hygiene runner LS 3000 - The original

- Full-length hygienic runner rail made of polished stainless steel
- Integrated lowered sections for a complete seal to the floor and frame
- Easy to clean
- Smooth running
- Convenient to operate

Optics

- Cool-Tek stainless steel surfaces*



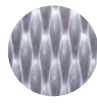
circle matted



mill finished



grounded



SM linen

- Strip galvanized, painted according to RAL color table* with polyester coating



9010



9002



9006



7016



5010



3000



1023

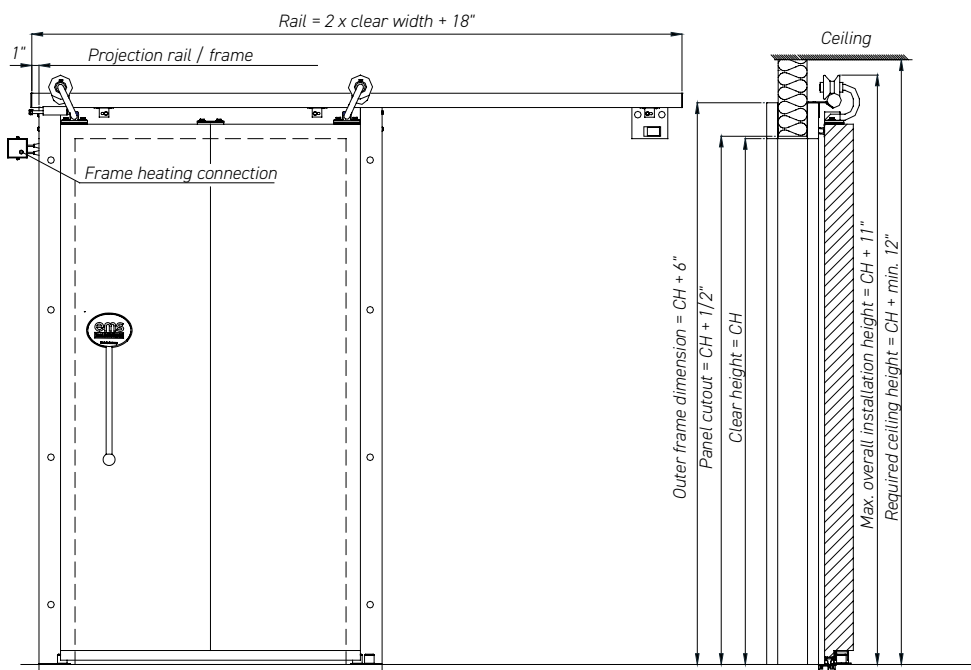
* Other surfaces and colors on request.

Convincing safety

- Secure locking with bolt closure

Optional design

- Double-leaf design allows quick and complete opening, even for larger door openings
- Integrated escape door in the door leaf
- Available with windows in various sizes and shapes
- Available as a flame-retardant version (FS 120), fire protection class B-s2, d0





Manual Sliding Doors

FS 120 / FS 140

Application

Freezer rooms

Dimensions in inch

1-FLG Max. Width
Max. Height

19' 8" / 19' 8"
19' 8" / 19' 8"

2-FLG Max. Width
Max. Height

26' 3" / 26' 3"
19' 8" / 19' 8"

Other formats available on request.

Sheet thickness

4 1/2" / 5 1/2"

Temperature range

-18.4°F

Heating

default / opt. Increased heating

Model

Stainless steel

Stainless steel V2A (1.4301), V4A (1.4404) to EN 10088-2
Circular matted finish, grounded, SM linen, mill finished (2B)

Galvanized sheet steel

Strip galvanized, quality class Z275,
corrosion protection class III according to DIN EN 10169/10143,
polyester coating 25µm
Industrial colors according to Cool-Tek color table

Suspension

Hygienic tube track, polished,
stainless steel V2A roller holder

Windows with stainless steel glazing beads

ISO-2-fold
ISO-3-fold
(opt. surface heated)

Seals

Side seal

EPDM

Bottom seal

TPE teflon-coated

Fittings

Cool-Tek stainless steel lever handle 2013/2020

Options Door leaf / Frame

Bolt locking, Impact protection
Pressure equalization valve (opt. heated)
additional heating closure

Frame

Technical details

Installation blockwork

Flat frame 6" x 2" (bracket mounting)
Flat frame 6" x 2" (with pocket holes)

Fig. 1.2
-

Installation panels

Clamp frame installation

Fig. 1.3

Threshold

Fig. 1.6

Technical details

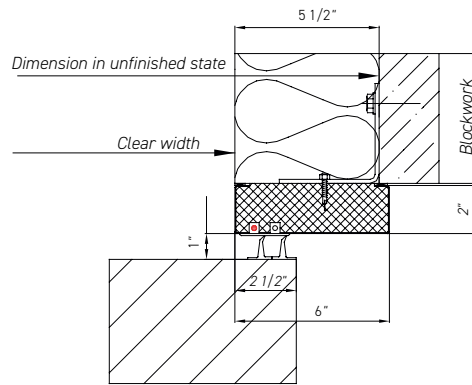


Fig. 1.2 Blockwork / Flat frame, bracket mounting

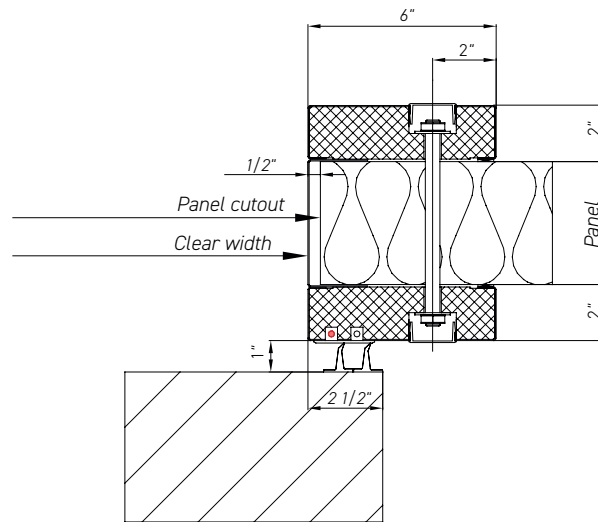


Fig. 1.3 Panel / Clamp frame

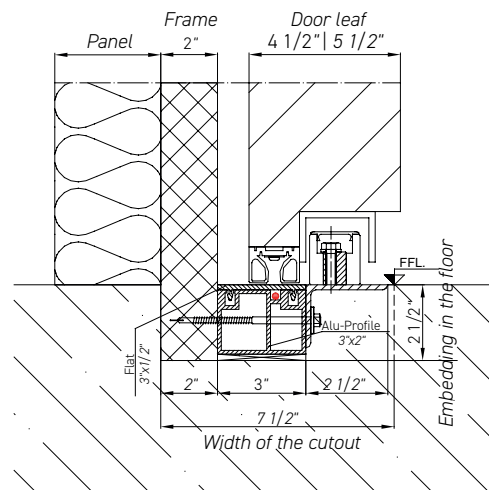


Fig. 1.6 Threshold installation FS 120 / FS 140|160|200

Shock room version FS 160|200

Highest industrial insulation properties

Manual Sliding Doors



Cool-Tek hygiene runner LS 3000 - The original

- Full-length hygienic runner rail made of polished stainless steel
- Integrated lowered sections for a complete seal to the floor and frame
- Easy to clean
- Smooth running
- Convenient to operate

Convincing safety

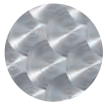
- Secure locking with bolt closure

Optional design

- Double-leaf design allows quick and complete opening, even for larger door openings
- Integrated escape door in the door leaf
- Available with windows in various sizes and shapes

Optics

- Cool-Tek stainless steel surfaces*



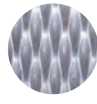
circle matted



mill finished



grounded



SM linen

- Strip galvanized, painted according to RAL color table* with polyester coating



9010



9002



9006



7016



5010

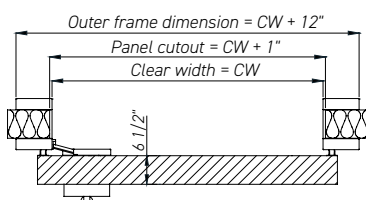
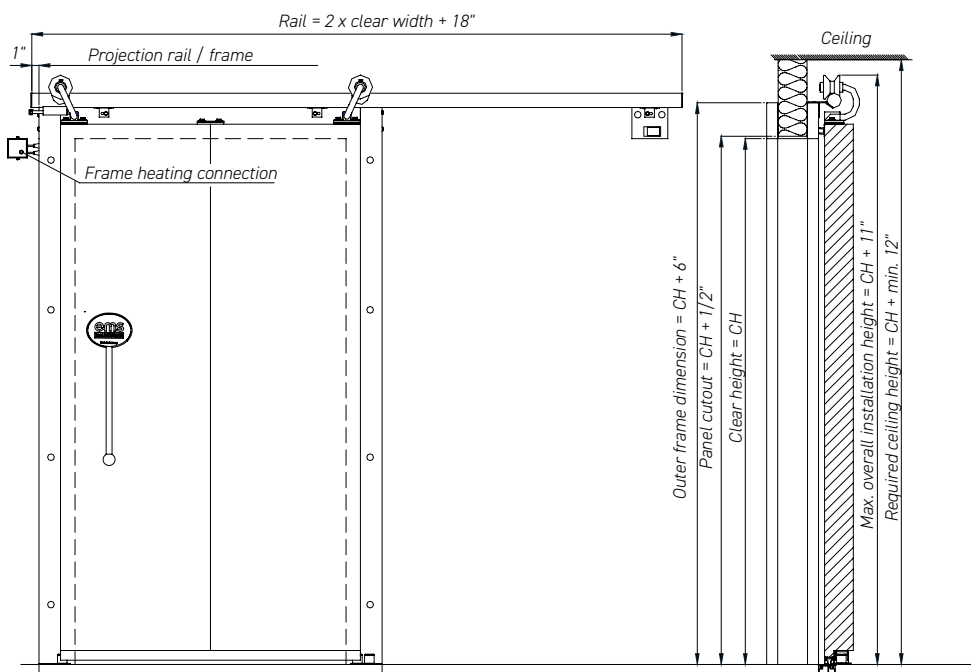


3000



1023

* Other surfaces and colors on request.





Manual Sliding Doors

FS 160 / FS 200

Application

Freezer rooms

Dimensions in inch

1-FLG Max. Width
Max. Height

19' 8" / 19' 8"
19' 8" / 19' 8"

2-FLG Max. Width
Max. Height

26' 3" / 26' 3"
19' 8" / 19' 8"

Other formats available on request.

Sheet thickness

6 1/2" / 8"

Temperature range

-112°F

Heating

opt. Increased heating

Model

Stainless steel

Stainless steel V2A (1.4301), V4A (1.4404) to EN 10088-2
Circular matted finish, grounded, SM linen, mill finished (2B)

Galvanized sheet steel

Strip galvanized, quality class Z275,
corrosion protection class III according to DIN EN 10169/10143,
polyester coating 25µm
Industrial colors according to Cool-Tek color table

Suspension

Hygienic tube track, polished,
stainless steel V2A roller holder

Windows with stainless steel glazing beads

ISO-2-fold
ISO-3-fold
(opt. surface heated)

Seals

Side seal

EPDM

Bottom seal

TPE teflon-coated

Fittings

Cool-Tek stainless steel lever handle 2013/2020

Options Door leaf / Frame

Bolt locking, Impact protection
Shock chamber design
Pressure equalization valve (opt. heated)
additional heating closure

Frame

Technical details

Installation blockwork

Flat frame 6" x 2" (bracket mounting)
Flat frame 6" x 2" (with pocket holes)

Fig. 1.2
-

Installation panels

Clamp frame installation

Fig. 1.3

Threshold

Fig. 1.6

Technical details

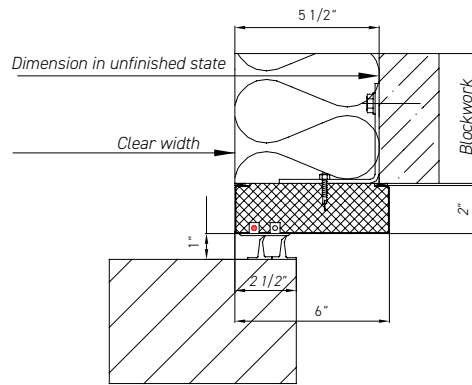


Fig. 1.2 Blockwork / Flat frame, bracket mounting

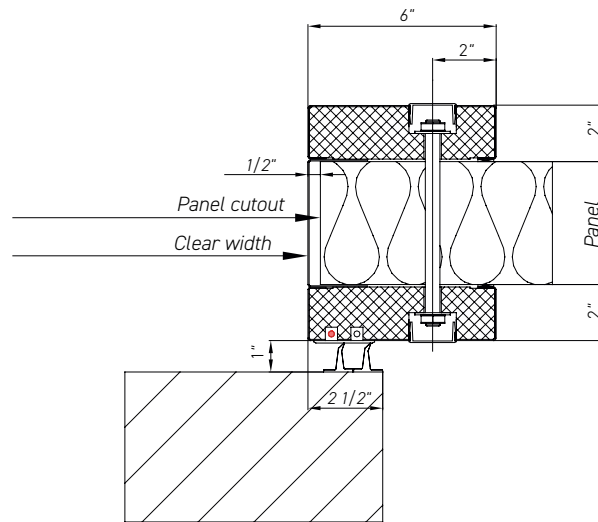


Fig. 1.3 Panel / Clamp frame

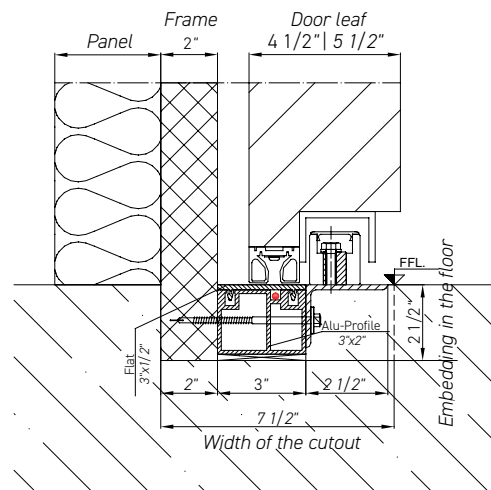


Fig. 1.6 Threshold installation FS 120 / FS 140|160|200

Patented Semi-Automatic Sliding Doors

Service room sliding door SS 80

Cold room sliding door CS 80|CS 100

Freezer room sliding door FS 120|140

Shock room version FS 160|200

All the advantages of the manual sliding door supplemented by

Patented technology

- Automatic closing with no electrical components required

Versatile options

- 3 in 1 operating modes - personnel passage, pallet passage, and service position
- Individual time setting

Service room sliding door SS 80

Space-saving room partitioning in operating rooms

Semi-Automatic Sliding Doors

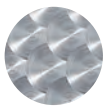


Cool-Tek hygiene runner LS 3000 - The original

- Continuous hygiene runner rail made of polished stainless steel
- Easy to clean
- Smooth running
- Convenient to operate

Optics

- Cool-Tek stainless steel surfaces*



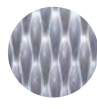
circle matted



mill finished



grounded



SM linen

- Strip galvanized, painted according to RAL color table* with polyester coating



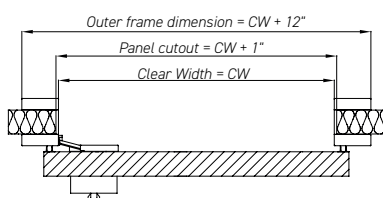
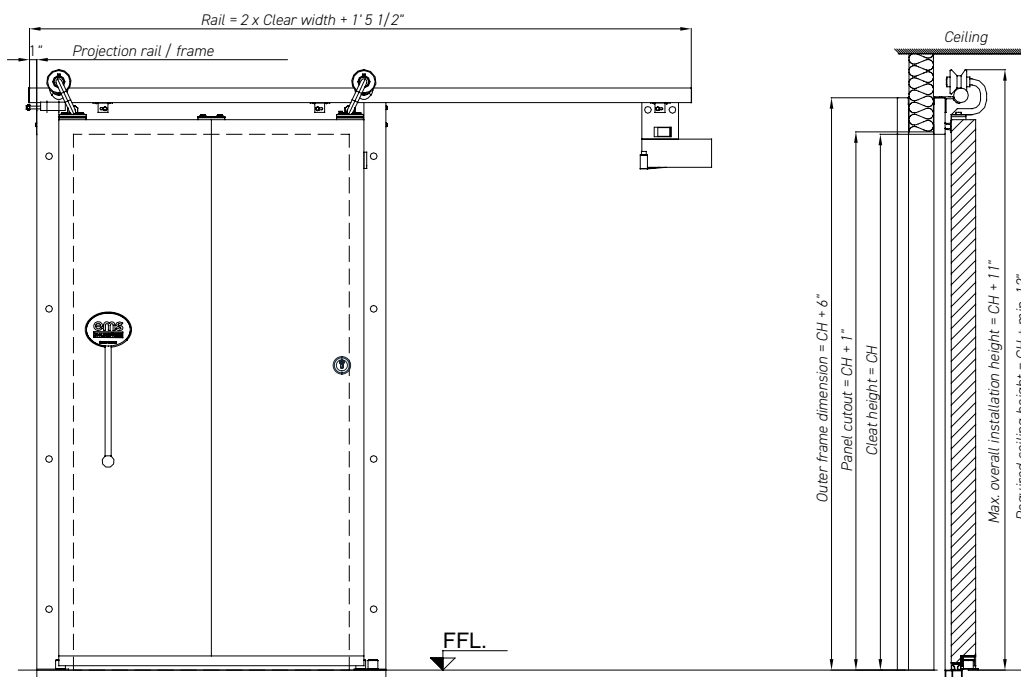
* Other surfaces and colors on request.

Convincing safety

- Secure locking with bolt closure

Optional design

- Double-leaf design allows quick and complete opening, even for larger door openings
- Integrated escape door in the door leaf
- Available with windows in various sizes and shapes (rectangular or round)





Semi-Automatic Sliding Doors

SS 80

Application

Service rooms

Dimensions in inch

1-FLG Max. Width

4' 5"

Max. Height

7' 8 1/2"

Other formats available on request.

Sheet thickness

3"

Temperature range

Heating

Model

Stainless steel

Stainless steel V2A (1.4301), V4A (1.4404) to EN 10088-2
Circular matted finish, grounded, SM linen, mill finished (2B)

Galvanized sheet steel

Strip galvanized, quality class Z275,
corrosion protection class III according to DIN EN 10169/10143,
polyester coating 25µm
Industrial colors according to Cool-Tek color table

Suspension

Hygienic tube track, polished,
stainless steel V2A roller holder

Windows with stainless steel glazing beads

VSG or polycarbonate, rectangular
VSG or polycarbonate, round

Seals

Side seal

EPDM

Bottom seal

-

Fittings

Stainless steel tubular handle
Cool-Tek stainless steel lever handle 2013/2020

Options Door leaf / Frame

Bolt locking, Impact protection

Frame

Technical details

Installation blockwork

Flat frame 6" x 2" (bracket mounting)

-

Flat frame 6" x 2" (with pocket holes)

Fig. 1.1

Installation panels

Clamp frame installation

Fig. 1.3

Threshold

-

Technical details

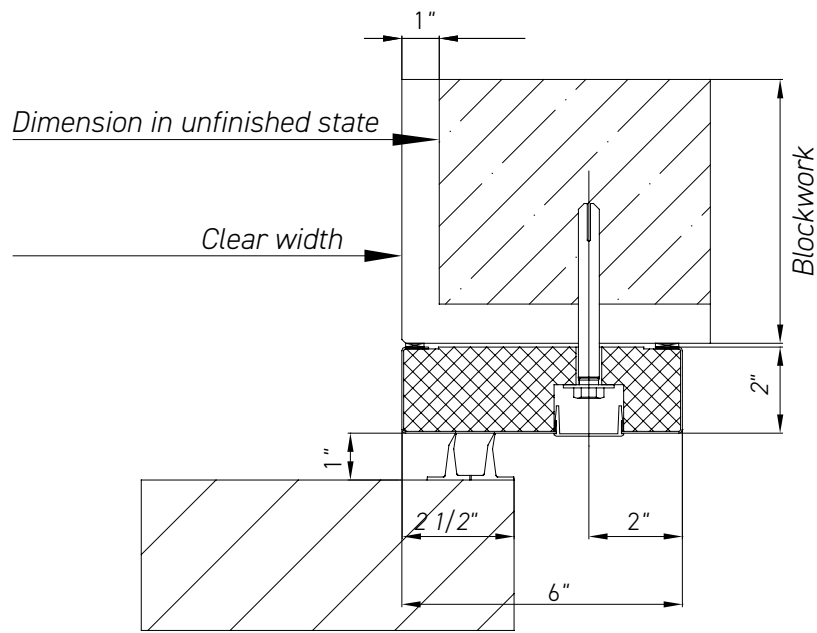


Fig. 1.1 Blockwork / Flat frame with pocket holes

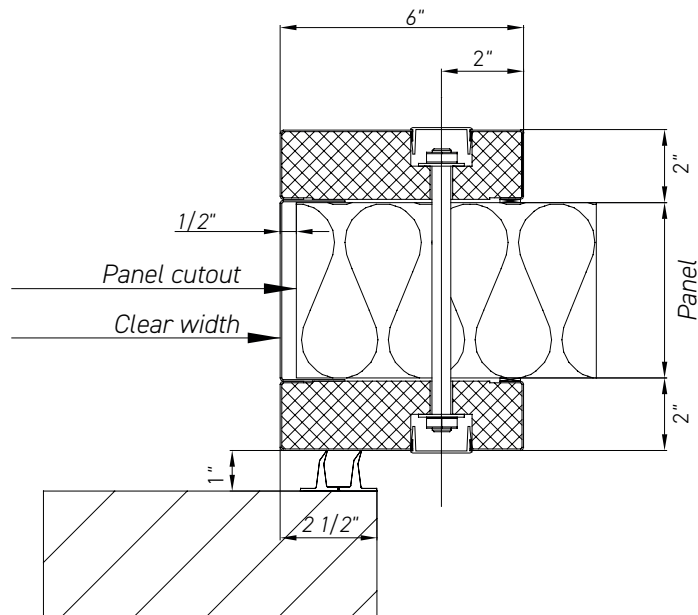


Fig. 1.3 Panel / Clamp frame

Cold room sliding door CS 80|100

Highest industrial insulation properties

Semi-Automatic Sliding Doors

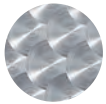


Cool-Tek hygiene runner LS 3000 - The original

- Full-length hygienic runner rail made of polished stainless steel
- Integrated lowered sections for a complete seal to the floor and frame
- Easy to clean
- Smooth running
- Convenient to operate

Optics

- Cool-Tek stainless steel surfaces*



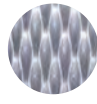
circle matted



mill finished



grounded



SM linen

- Strip galvanized, painted according to RAL color table* with polyester coating



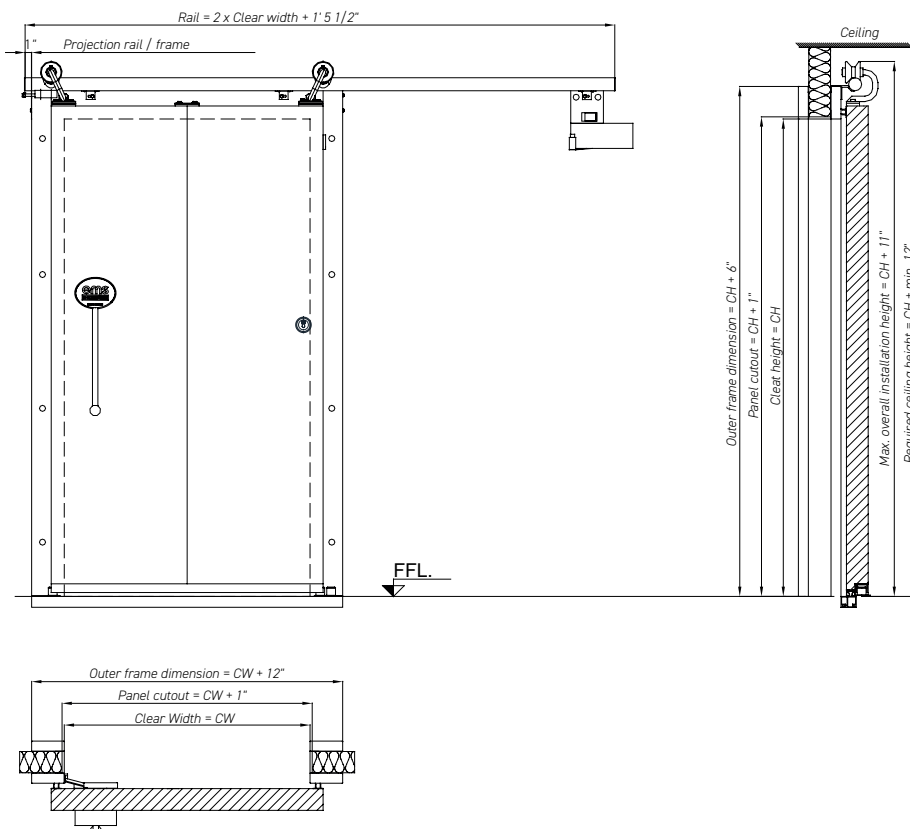
* Other surfaces and colors on request.

Convincing safety

- Secure locking with bolt closure

Optional design

- Double-leaf design allows quick and complete opening, even for larger door openings
- Integrated escape door in the door leaf
- Available with windows in various sizes and shapes
- With pipe path passage





Semi-Automatic Sliding Doors

CS 80 / CS 100

Application

Cold storage rooms

Dimensions in inch

1-FLG Max. Width

4' 5"

Max. Height

7' 8 1/2"

Other formats available on request.

Sheet thickness

3" / 4"

Temperature range

Normal temperature up to 33.8°F

Heating

Model

Stainless steel

Stainless steel V2A (1.4301), V4A (1.4404) to EN 10088-2
Circular matted finish, grounded, SM linen, mill finished (2B)

Galvanized sheet steel

Strip galvanized, quality class Z275,
corrosion protection class III according to DIN EN 10169/10143,
polyester coating 25µm
Industrial colors according to Cool-Tek color table

Suspension

Hygienic tube track, polished,
stainless steel V2A roller holder

Windows with stainless steel glazing beads

VSG or polycarbonate, rectangular
VSG or polycarbonate, round

Seals

Side seal

EPDM

Bottom seal

TPE teflon-coated

Fittings

Cool-Tek stainless steel lever handle 2013/2020

Options Door leaf / Frame

Bolt locking, Impact protection
Pipe path passage
Cold interrupter

Frame

Technical details

Installation blockwork

Flat frame 6" x 2" (bracket mounting)

Fig. 1.2

Flat frame 6" x 2" (with pocket holes)

Fig. 1.1

Installation panels

Clamp frame installation

Fig. 1.3

Threshold

Fig. 1.4 / Fig. 1.5

Technical details

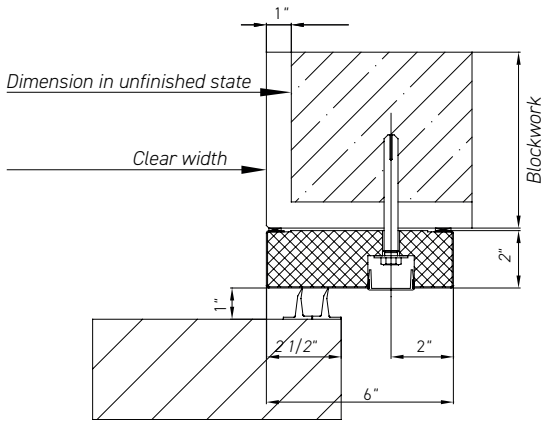


Fig. 1.1 Blockwork / Flat frame with pocket holes

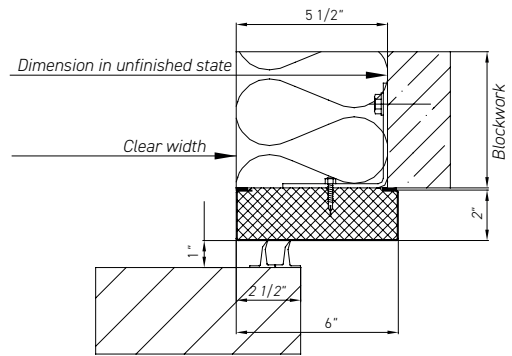


Fig. 1.2 Blockwork / Flat frame, bracket mounting

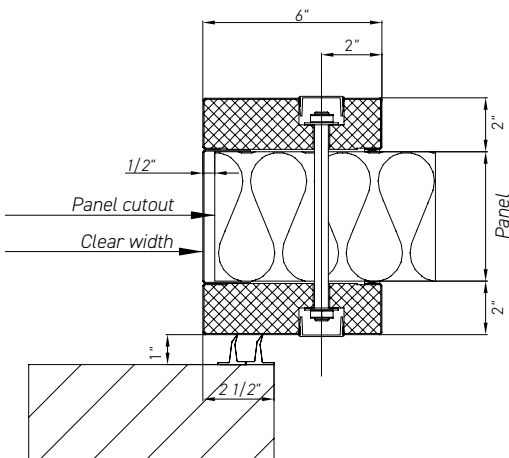


Fig. 1.3 Panel / Clamp frame

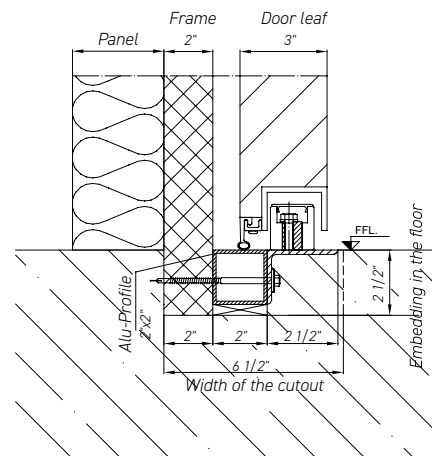


Fig. 1.4 Threshold installation CS 80

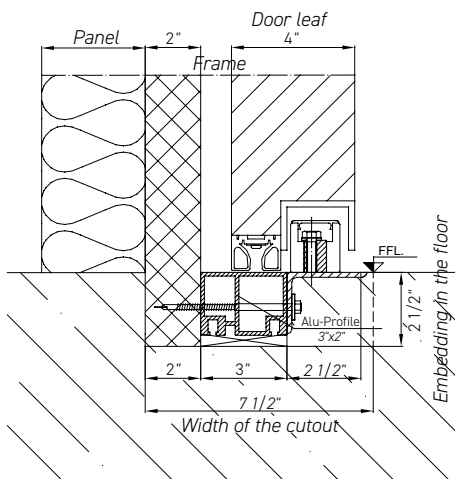


Fig. 1.5 Threshold installation CS 100

Freezer room sliding door FS 120|140

Semi-Automatic Sliding Doors



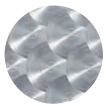
Highest industrial insulation properties

Cool-Tek hygiene runner LS 3000 - The original

- Full-length hygienic runner rail made of polished stainless steel
- Integrated lowered sections for a complete seal to the floor and frame
- Easy to clean
- Smooth running
- Convenient to operate

Optics

- Cool-Tek stainless steel surfaces*



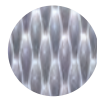
circle matted



mill finished



grounded



SM linen

- Strip galvanized, painted according to RAL color table* with polyester coating



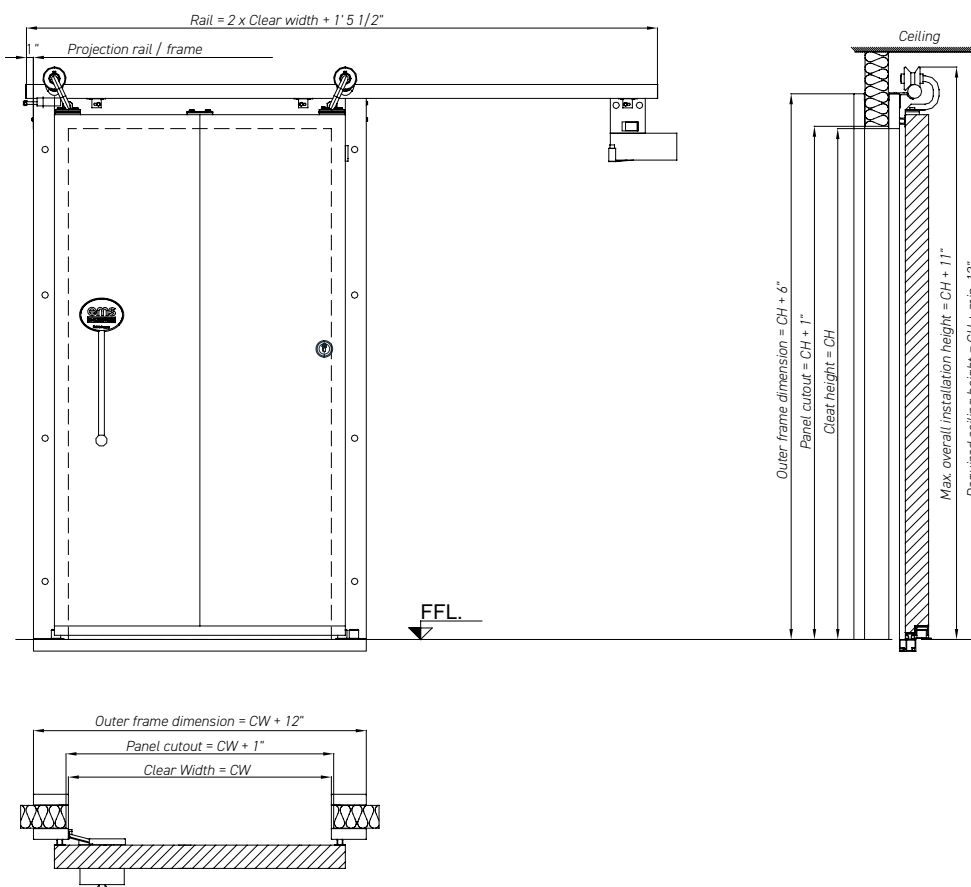
* Other surfaces and colors on request.

Convincing safety

- Secure locking with bolt closure

Optional design

- Double-leaf design allows quick and complete opening, even for larger door openings
- Integrated escape door in the door leaf
- Available with windows in various sizes and shapes
- Available as a flame-retardant version (FS 120), fire protection class B-s2, d0





Semi-Automatic Sliding Doors

FS 120 / FS 140

Application

Freezer rooms

Dimensions in inch

1-FLG Max. Width

4' 5"

Max. Height

7' 8 1/2"

Other formats available on request.

Sheet thickness

4 1/2" / 5 1/2"

Temperature range

-18.4°F

Heating

default / opt. Increased heating

Model

Stainless steel

Stainless steel V2A (1.4301), V4A (1.4404) to EN 10088-2
Circular matted finish, grounded, SM linen, mill finished (2B)

Galvanized sheet steel

Strip galvanized, quality class Z275,
corrosion protection class III according to DIN EN 10169/10143,
polyester coating 25µm
Industrial colors according to Cool-Tek color table

Suspension

Hygienic tube track, polished,
stainless steel V2A roller holder

Windows with stainless steel glazing beads

ISO-2-fold
ISO-3-fold
(opt. surface heated)

Seals

Side seal

EPDM

Bottom seal

TPE teflon-coated

Fittings

Cool-Tek stainless steel lever handle 2013/2020

Options Door leaf / Frame

Bolt locking, Impact protection
Pressure equalization valve (opt. heated)
additional heating closure

Frame

Technical details

Installation blockwork

Flat frame 6" x 2" (bracket mounting)

Fig. 1.2

Flat frame 6" x 2" (with pocket holes)

-

Installation panels

Clamp frame installation

Fig. 1.3

Threshold

Fig. 1.6

Technical details

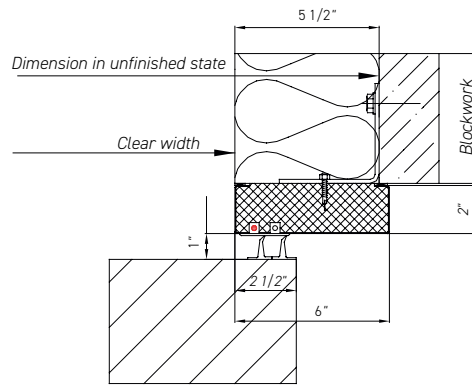


Fig. 1.2 Blockwork / Flat frame, bracket mounting

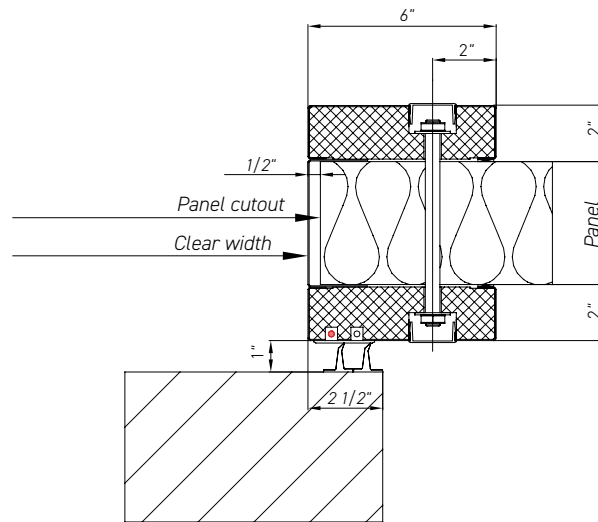


Fig. 1.3 Panel / Clamp frame

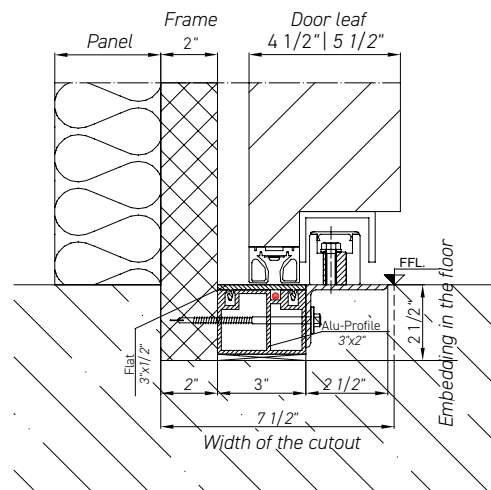


Fig. 1.6 Threshold installation FS 120 / FS 140|160|200

Shock room version FS 160|200

Highest industrial insulation properties

Semi-Automatic Sliding Doors

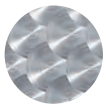


Cool-Tek hygiene runner LS 3000 - The original

- Full-length hygienic runner rail made of polished stainless steel
- Integrated lowered sections for a complete seal to the floor and frame
- Easy to clean
- Smooth running
- Convenient to operate

Optics

- Cool-Tek stainless steel surfaces*



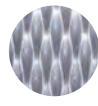
circle matted



mill finished



grounded



SM linen

- Strip galvanized, painted according to RAL color table* with polyester coating



9010



9002



9006



7016



5010



3000



1023

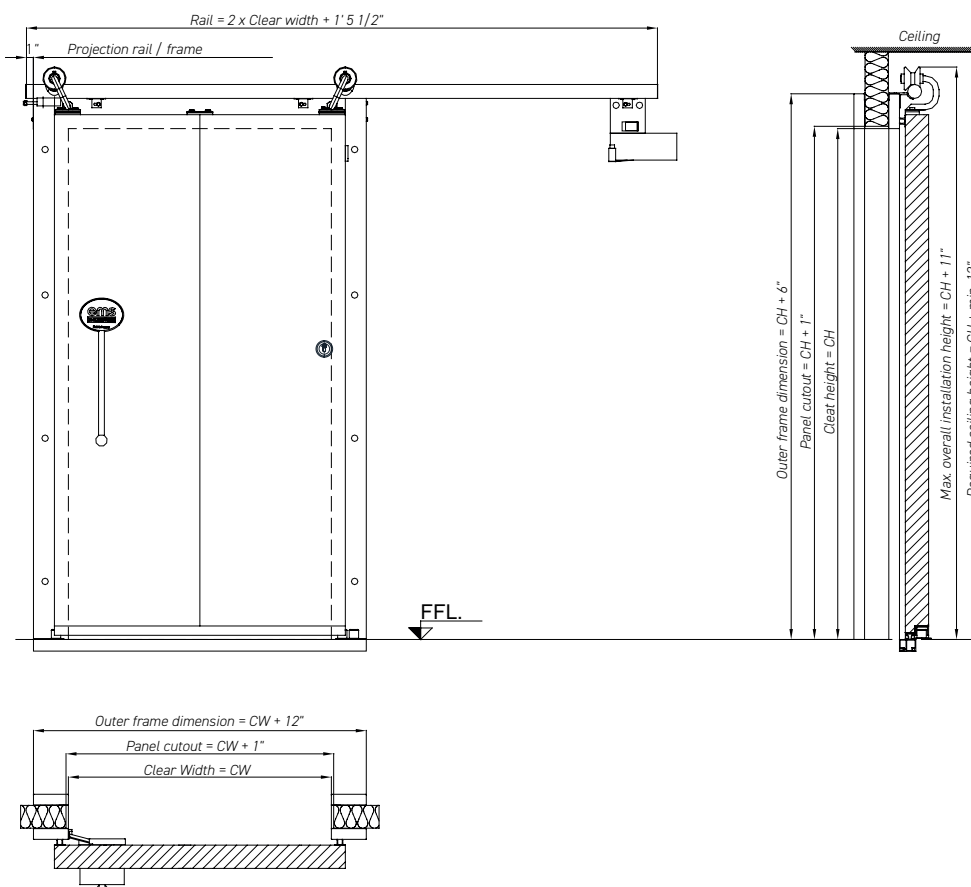
* Other surfaces and colors on request.

Convincing safety

- Secure locking with bolt closure

Optional design

- Double-leaf design allows quick and complete opening, even for larger door openings
- Integrated escape door in the door leaf
- Available with windows in various sizes and shapes





Semi-Automatic Sliding Doors

FS 160 / FS 200

Application

Freezer rooms

Dimensions in inch

1-FLG Max. Width

4' 5"

Max. Height

7' 8 1/2"

Other formats available on request.

Sheet thickness

6 1/2" / 8"

Temperature range

-112°F

Heating

opt. Increased heating

Model

Stainless steel

Stainless steel V2A (1.4301), V4A (1.4404) to EN 10088-2
Circular matted finish, grounded, SM linen, mill finished (2B)

Galvanized sheet steel

Strip galvanized, quality class Z275,
corrosion protection class III according to DIN EN 10169/10143,
polyester coating 25µm
Industrial colors according to Cool-Tek color table

Suspension

Hygienic tube track, polished,
stainless steel V2A roller holder

Windows with stainless steel glazing beads

ISO-2-fold
ISO-3-fold
(opt. surface heated)

Seals

Side seal

EPDM

Bottom seal

TPE teflon-coated

Fittings

Cool-Tek stainless steel lever handle 2013/2020

Options Door leaf / Frame

Bolt locking, Impact protection
Shock chamber design
Pressure equalization valve (opt. heated)
additional heating closure

Frame

Technical details

Installation blockwork

Flat frame 6" x 2" (bracket mounting)

Fig. 1.2

Flat frame 6" x 2" (with pocket holes)

-

Installation panels

Clamp frame installation

Fig. 1.3

Threshold

Fig. 1.6

Technical details

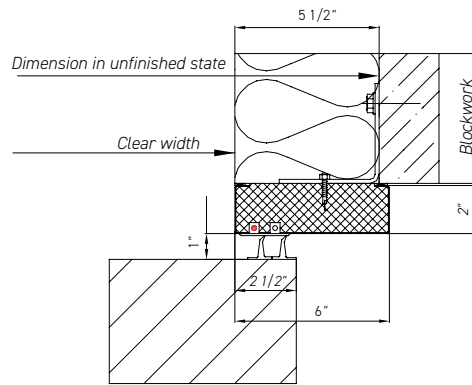


Fig. 1.2 Blockwork / Flat frame, bracket mounting

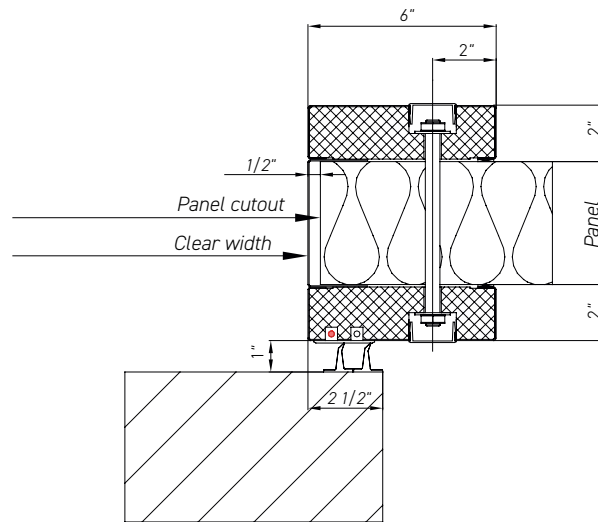


Fig. 1.3 Panel / Clamp frame

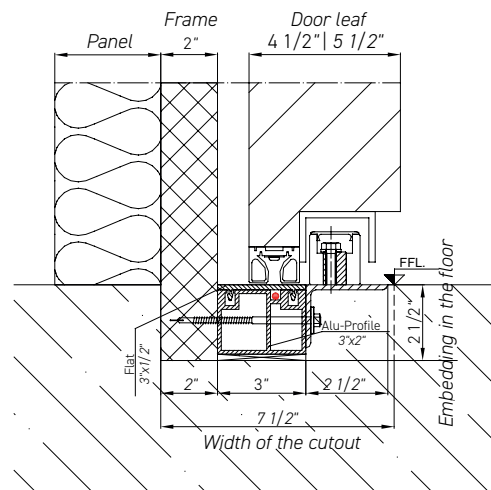


Fig. 1.6 Threshold installation FS 120 / FS 140|160|200

Automatic Sliding Doors

Service room sliding door SS 80

Cold room sliding door CS 80|CS 100

Freezer room sliding door FS 120|140

Shock room version FS 160|200

All the advantages of the manual sliding door supplemented by

Automatic closing

- Sky motor (suitable use for down to -22°F, heated)
- Feig control unit (ready to plug in ex works) which can be extended with potential-free contacts e.g. for alarm system connection
- High frequency possible

Patented decoupling mechanism

- Enables easy, manual operation

Tested safety

- Touch-sensitive safety edge, optional traveling light grid



Service room sliding door SS 80

Space-saving room partitioning in operating rooms

Automatic Sliding Doors

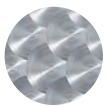


Cool-Tek hygiene runner LS 3000 - The original

- Continuous hygiene runner rail made of polished stainless steel
- Easy to clean
- Smooth running
- Convenient to operate

Optics

- Cool-Tek stainless steel surfaces*



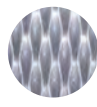
circle matted



mill finished



grounded



SM linen

- Strip galvanized, painted according to RAL color table* with polyester coating



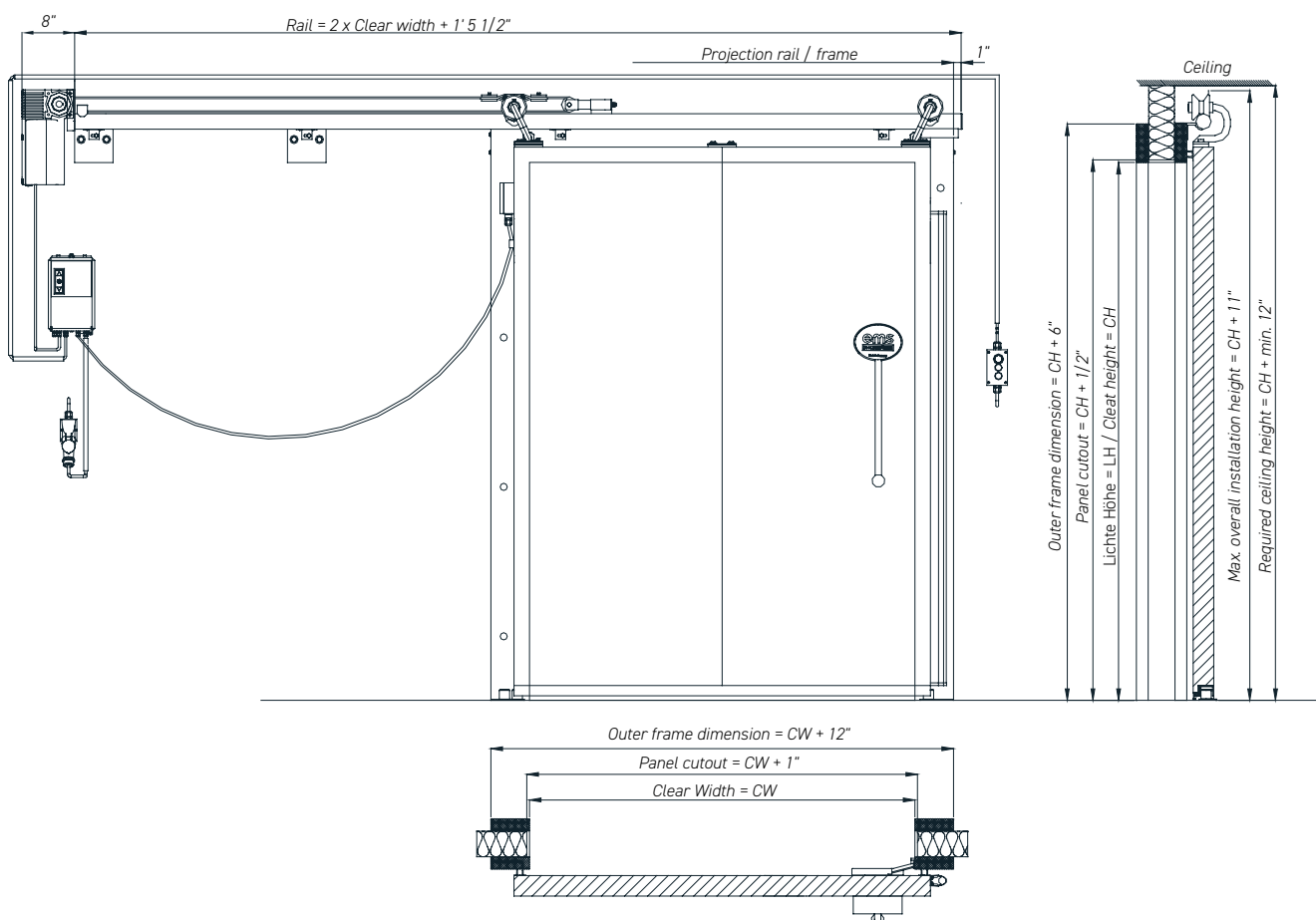
* Other surfaces and colors on request.

Convincing safety

- Secure locking with bolt closure

Optional design

- Double-leaf design allows quick and complete opening, even for larger door openings
- Integrated escape door in the door leaf
- Available with windows in various sizes and shapes (rectangular or round)





Automatic Sliding Doors

SS 80

Application

Service rooms

Dimensions in inch

1-FLG Max. Width
Max. Height

8' 2 1/2"

9' 10"

2-FLG Max. Width
Max. Height

16' 5"

16' 5"

Other formats available on request.

Sheet thickness

3"

Temperature range

Heating

Model

Stainless steel

Stainless steel V2A (1.4301), V4A (1.4404) to EN 10088-2
Circular matted finish, grounded, SM linen, mill finished (2B)

Galvanized sheet steel

Strip galvanized, quality class Z275,
corrosion protection class III according to DIN EN 10169/10143,
polyester coating 25µm
Industrial colors according to Cool-Tek color table

Suspension

Hygienic tube track, polished,
stainless steel V2A roller holder

Windows with stainless steel glazing beads

VSG or polycarbonate, rectangular
VSG or polycarbonate, round

Seals

Side seal

EPDM

Bottom seal

-

Fittings

Stainless steel tubular handle
Cool-Tek stainless steel lever handle 2013/2020

Options Door leaf / Frame

Safety edge, optional moving light grid
Bolt locking, Impact protection
Pull switch, Ultrasonic sensor
Patented decoupling mechanism

Frame

Technical details

Installation blockwork

Flat frame 6" x 2" (bracket mounting)

-

Flat frame 6" x 2" (with pocket holes)

Fig. 1.1

Installation panels

Clamp frame installation

Fig. 1.3

Threshold

-

Technical details

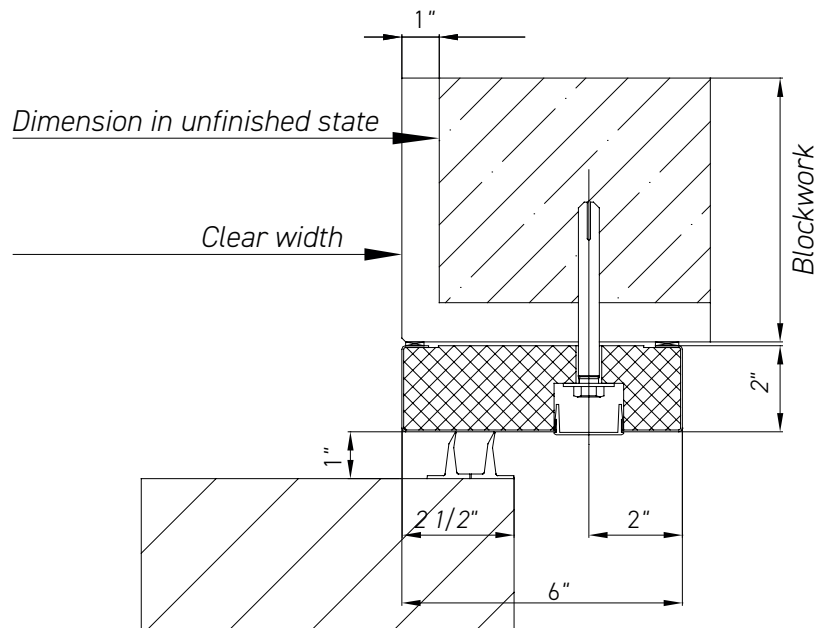


Fig. 1.1 Blockwork / Flat frame with pocket holes

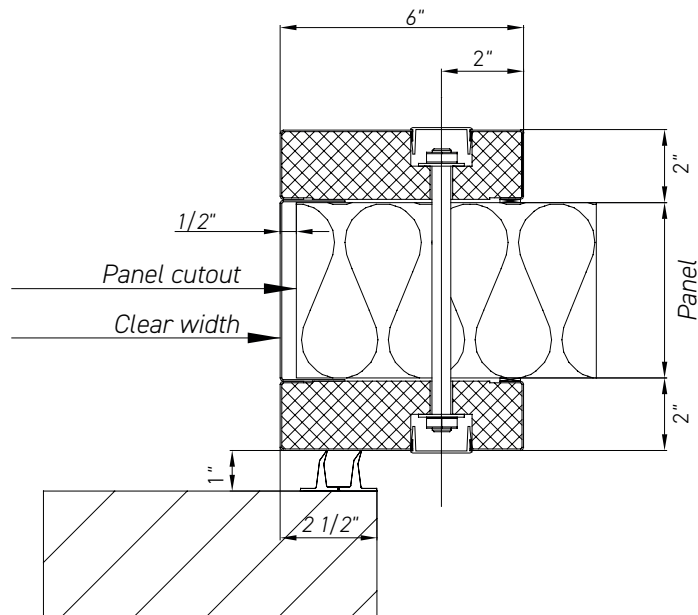


Fig. 1.3 Panel / Clamp frame

Cold room sliding door CS 80|100

Highest industrial insulation properties

Automatic Sliding Doors

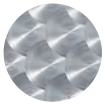


Cool-Tek hygiene runner LS 3000 - The original

- Full-length hygienic runner rail made of polished stainless steel
- Integrated lowered sections for a complete seal to the floor and frame
- Easy to clean
- Smooth running
- Convenient to operate

Optics

- Cool-Tek stainless steel surfaces*



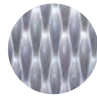
circle matted



mill finished



grounded



SM lined

- Strip galvanized, painted according to RAL color table* with polyester coating



9010



9002



9006



7016



5010



3000



1023

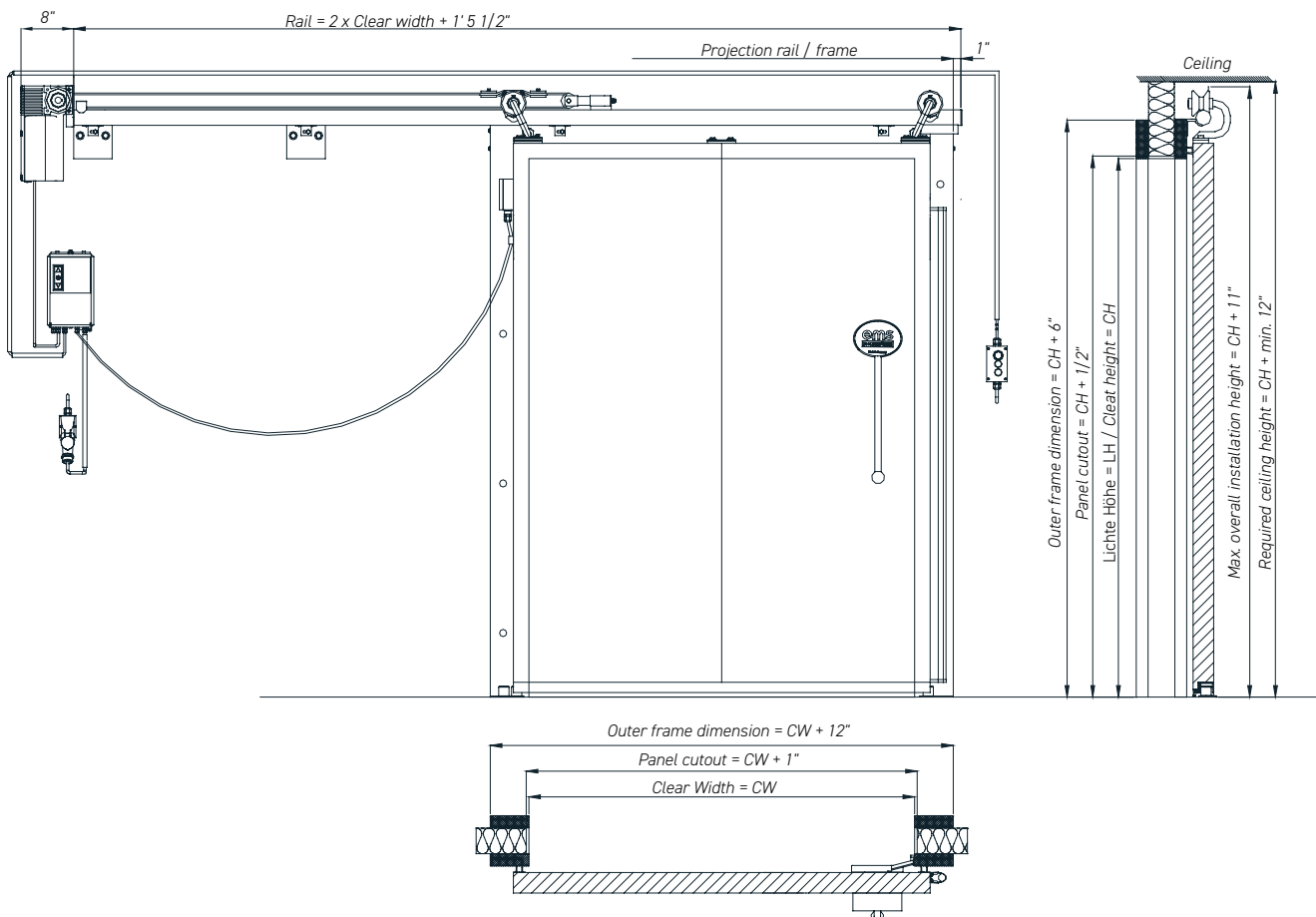
* Other surfaces and colors on request.

Convincing safety

- Secure locking with bolt closure

Optional design

- Double-leaf design allows quick and complete opening, even for larger door openings
- Integrated escape door in the door leaf
- Available with windows in various sizes and shapes
- Optional pipe path passage





Automatic Sliding Doors

CS 80 / CS 100

Application

Cold storage rooms

Dimensions in inch

1-FLG Max. Width
Max. Height

19' 8" / 19' 8"
19' 8" / 19' 8"

2-FLG Max. Width
Max. Height

26' 3" / 26' 3"
19' 8" / 19' 8"

Other formats available on request.

Sheet thickness

3" / 4"

Temperature range

Normal temperature up to 33.8°F

Heating

Model

Stainless steel

Stainless steel V2A (1.4301), V4A (1.4404) to EN 10088-2
Circular matted finish, grounded, SM linen, mill finished (2B)

Galvanized sheet steel

Strip galvanized, quality class Z275,
corrosion protection class III according to DIN EN 10169/10143,
polyester coating 25µm
Industrial colors according to Cool-Tek color table

Suspension

Hygienic tube track, polished,
stainless steel V2A roller holder

Windows with stainless steel glazing beads

VSG or polycarbonate, rectangular
VSG or polycarbonate, round

Seals

Side seal

EPDM

Bottom seal

TPE teflon-coated

Fittings

Cool-Tek stainless steel lever handle 2013/2020

Options Door leaf / Frame

Safety edge, optional moving light grid
Bolt locking, Impact protection
Pull switch, Ultrasonic sensor
Patented decoupling mechanism
Pipe path passage, Cold interrupter

Frame

Technical details

Installation blockwork

Flat frame 5,91" x 1,77" (bracket mounting)

Fig. 1.2

Flat frame 5,91" x 1,77" (with pocket holes)

Fig. 1.1

Installation panels

Clamp frame installation

Fig. 1.3

Threshold

Fig. 1.4 / Fig. 1.5

Technical details

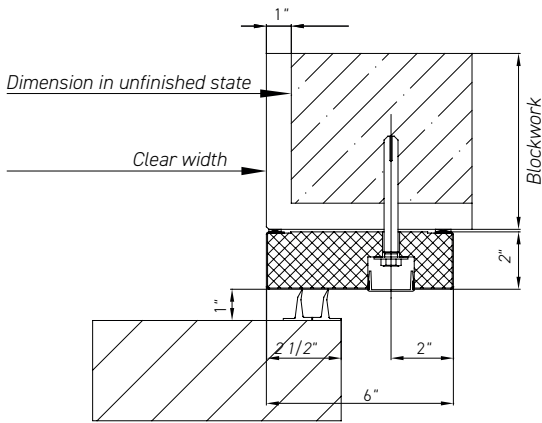


Fig. 1.1 Blockwork / Flat frame with pocket holes

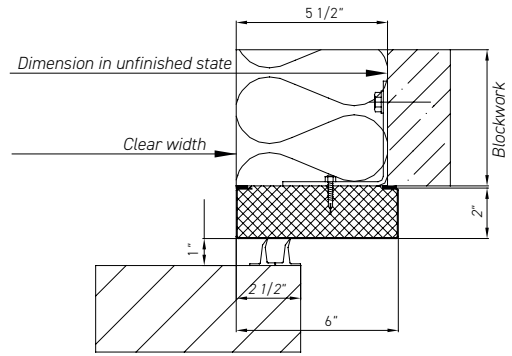


Fig. 1.2 Blockwork / Flat frame, bracket mounting

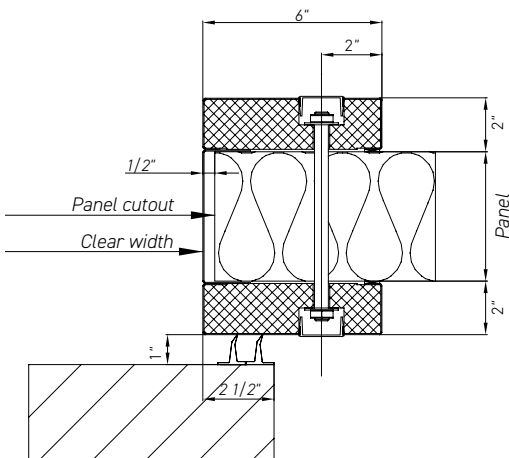


Fig. 1.3 Panel / Clamp frame

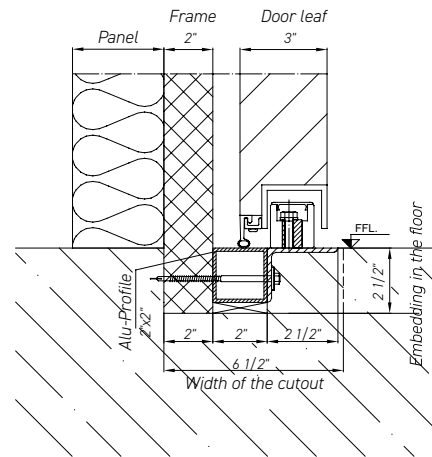


Fig. 1.4 Threshold installation CS 80

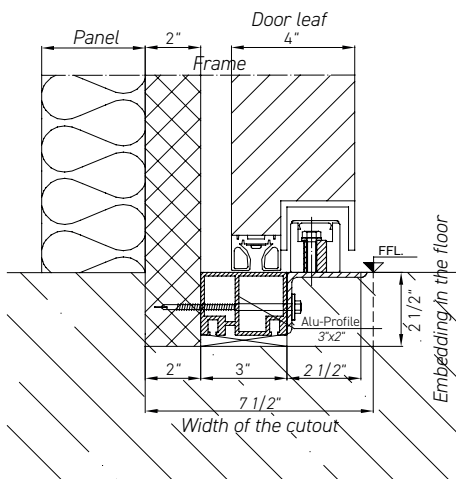


Fig. 1.5 Threshold installation CS 100

Freezer room sliding door FS 120|140

Automatic Sliding Doors



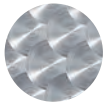
Highest industrial insulation properties

Cool-Tek hygiene runner LS 3000 - The original

- Full-length hygienic runner rail made of polished stainless steel
- Integrated lowered sections for a complete seal to the floor and frame
- Easy to clean
- Smooth running
- Convenient to operate

Optics

- Cool-Tek stainless steel surfaces*



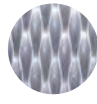
circle matted



mill finished



grounded



SM lined

- Strip galvanized, painted according to RAL color table* with polyester coating



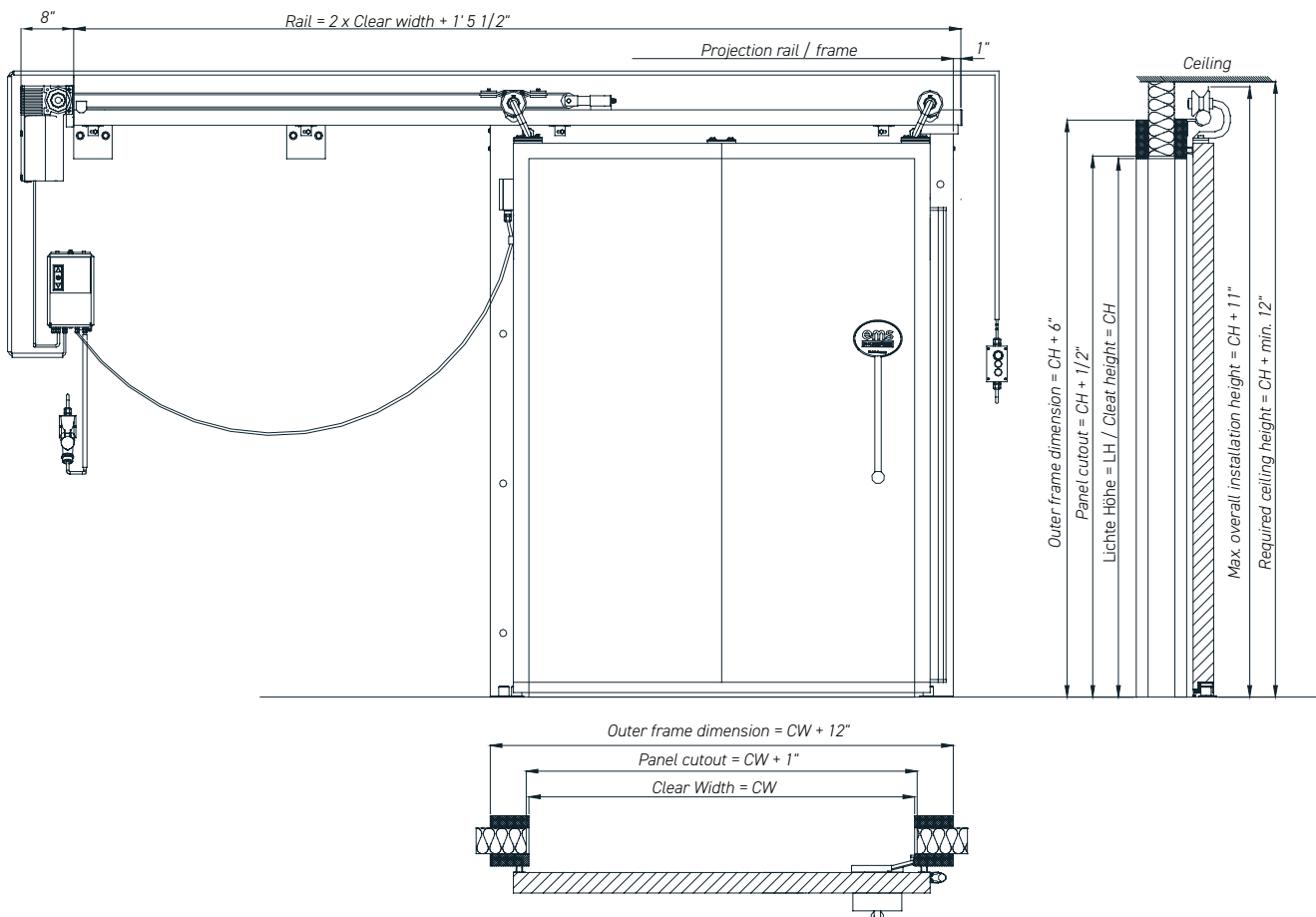
* Other surfaces and colors on request.

Convincing safety

- Secure locking with bolt closure

Optional design

- Double-leaf design allows quick and complete opening, even for larger door openings
- Integrated escape door in the door leaf
- Available with windows in various sizes and shapes
- Available as a flame-retardant version (FS 120) with fire protection class B-s2, d0





Automatic Sliding Doors

FS 120 / FS 140

Application

Freezer rooms

Dimensions in inch

1-FLG Max. Width
Max. Height

19' 8" / 19' 8"
19' 8" / 19' 8"

2-FLG Max. Width
Max. Height

26' 3" / 26' 3"
19' 8" / 19' 8"

Other formats available on request.

Sheet thickness

4 1/2" / 5 1/2"

Temperature range

-18.4°F

Heating

default / opt. Increased heating

Model

Stainless steel

Stainless steel V2A (1.4301), V4A (1.4404) to EN 10088-2
Circular matted finish, grounded, SM linen, mill finished (2B)

Galvanized sheet steel

Strip galvanized, quality class Z275,
corrosion protection class III according to DIN EN 10169/10143,
polyester coating 25µm
Industrial colors according to Cool-Tek color table

Suspension

Hygienic tube track, polished,
stainless steel V2A roller holder

Windows with stainless steel glazing beads

ISO-2-fold
ISO-3-fold
(opt. surface heated)

Seals

Side seal

EPDM

Bottom seal

TPE teflon-coated

Fittings

Cool-Tek stainless steel lever handle 2013/2020

Options Door leaf / Frame

Safety edge, optional moving light grid
Bolt locking, Impact protection
Pull switch, Ultrasonic sensor
Patented decoupling mechanism
Pressure equalization valve (opt. heated)
additional heating closure

Frame

Technical details

Installation blockwork

Flat frame 6" x 2" (bracket mounting)
Flat frame 6" x 2" (with pocket holes)

Fig. 1.2
-

Installation panels

Clamp frame installation

Fig. 1.3

Threshold

Fig. 1.6

Technical details

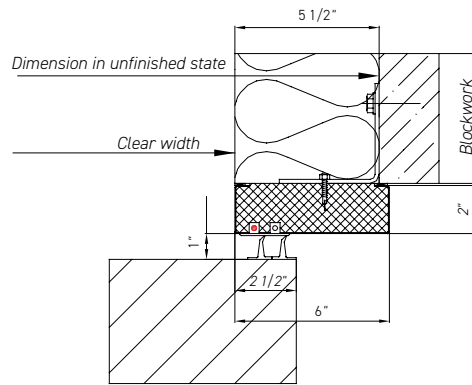


Fig. 1.2 Blockwork / Flat frame, bracket mounting

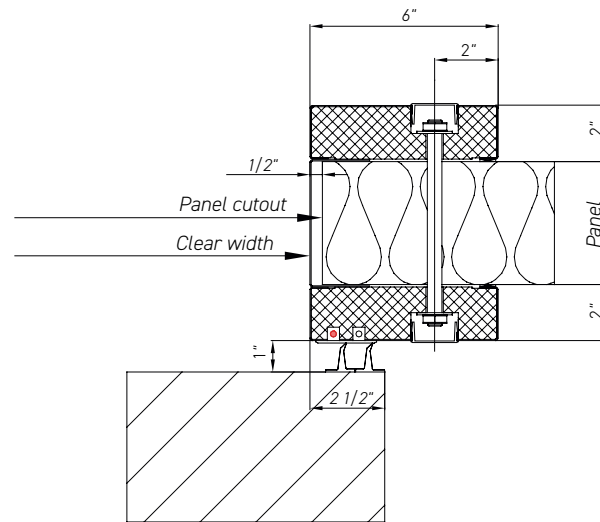


Fig. 1.3 Panel / Clamp frame

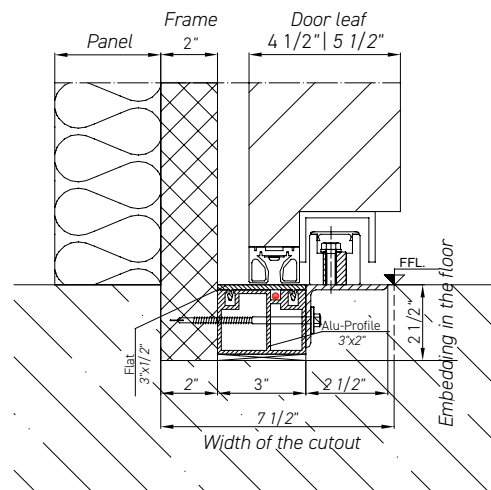


Fig. 1.6 Threshold installation FS 120 / FS 140|160|200

Shock room version FS 160|200

Highest industrial insulation properties

Automatic Sliding Doors



Cool-Tek hygiene runner LS 3000 - The original

- Full-length hygienic runner rail made of polished stainless steel
- Integrated lowered sections for a complete seal to the floor and frame
- Easy to clean
- Smooth running
- Convenient to operate

Convincing safety

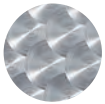
- Secure locking with bolt closure

Optional design

- Double-leaf design allows quick and complete opening, even for larger door openings
- Integrated escape door in the door leaf
- Available with windows in various sizes and shapes

Optics

- Cool-Tek stainless steel surfaces*



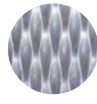
circle matted



mill finished



grounded



SM linen

- Strip galvanized, painted according to RAL color table* with polyester coating



9010



9002



9006



7016



5010

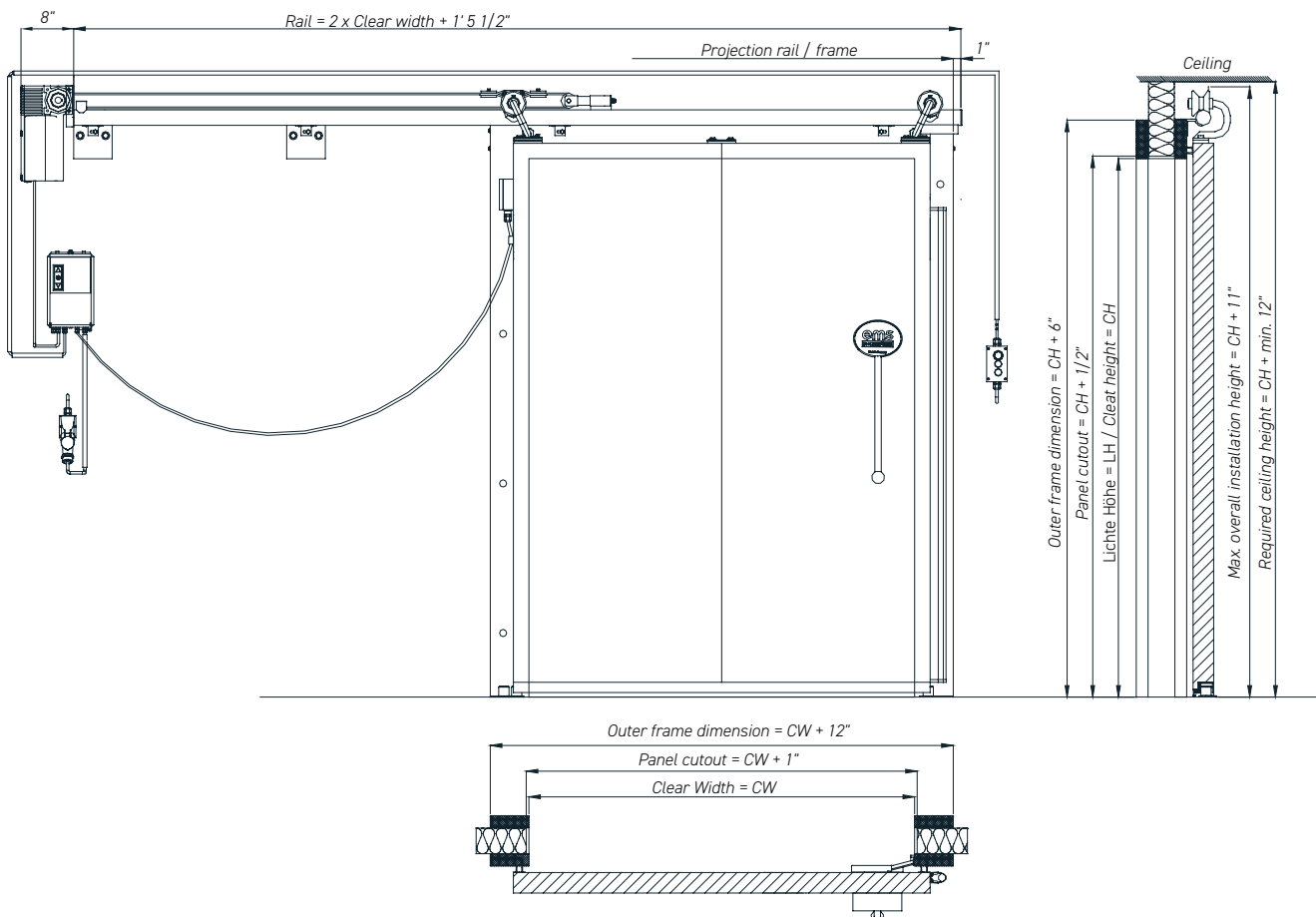


3000



1023

* Other surfaces and colors on request.





Automatic Sliding Doors

FS 160 / FS 200

Application

Freezer rooms

Dimensions in inch

1-FLG Max. Width
Max. Height

19' 8" / 19' 8"
19' 8" / 19' 8"

2-FLG Max. Width
Max. Height

26' 3" / 26' 3"
19' 8" / 19' 8"

Other formats available on request.

Sheet thickness

6 1/2" / 8"

Temperature range

-112°F

Heating

opt. Increased heating

Model

Stainless steel

Stainless steel V2A (1.4301), V4A (1.4404) to EN 10088-2
Circular matted finish, grounded, SM linen, mill finished (2B)

Galvanized sheet steel

Strip galvanized, quality class Z275,
corrosion protection class III according to DIN EN 10169/10143,
polyester coating 25µm
Industrial colors according to Cool-Tek color table

Suspension

Hygienic tube track, polished,
stainless steel V2A roller holder

Windows with stainless steel glazing beads

ISO-2-fold
ISO-3-fold
(opt. surface heated)

Seals

Side seal

EPDM

Bottom seal

TPE teflon-coated

Fittings

Cool-Tek stainless steel lever handle 2013/2020

Options Door leaf / Frame

Safety edge, optional moving light grid
Bolt locking, Impact protection
Pull switch, Ultrasonic sensor
Patented decoupling mechanism, Shock chamber design
Pressure equalization valve (opt. heated)
additional heating closure

Frame

Technical details

Installation blockwork

Flat frame 6" x 2" (bracket mounting)
Flat frame 6" x 2" (with pocket holes)

Fig. 1.2
-

Installation panels

Clamp frame installation

Fig. 1.3

Threshold

Fig. 1.6

Technical details

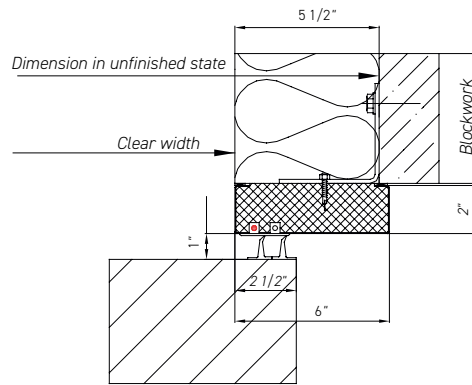


Fig. 1.2 Blockwork / Flat frame, bracket mounting

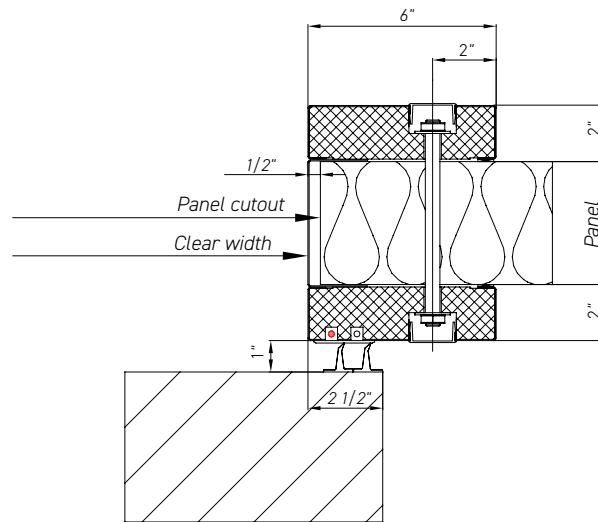


Fig. 1.3 Panel / Clamp frame

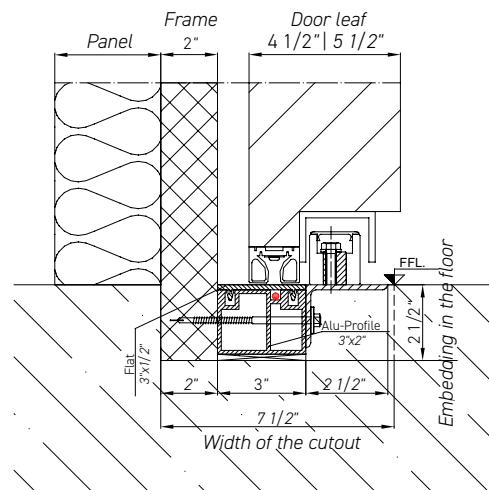


Fig. 1.6 Threshold installation FS 120 / FS 140|160|200

Gas-tight ULO Sliding Doors

Gas-tight ULO Sliding Door GTD 100

Ensures precise control of ambient conditions, maximizing storage efficiency and extending the shelf life of fruit and vegetables.

Gas-tight ULO Sliding Door GTD 100

Highest industrial insulation properties



Cool-Tek LS 3000 hygiene runner - The original

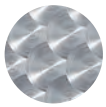
- Continuous hygienic runner rail made of polished stainless steel
- Integrated lowered sections for a complete seal to the floor and frame
- Easy to clean
- Smooth running
- Convenient to operate

Optional design

- Gas-tight special window with lockable emergency release

Optics

- Cool-Tek stainless steel surfaces*



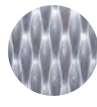
circle matted



mill finished



grounded

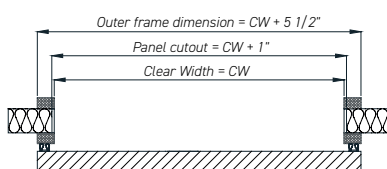
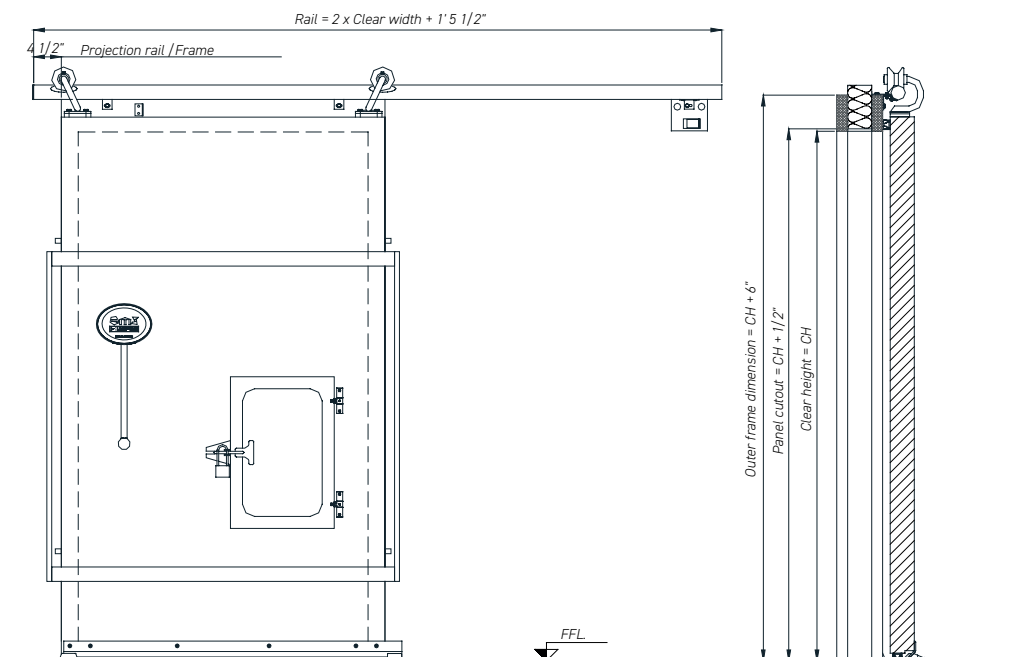


SM linen

- Strip galvanized, painted according to RAL color table* with polyester coating



* Other surfaces and colors on request.





Gas-tight ULO Sliding Doors

ULO GTD 100

Application Storage rooms / CA rooms (controlled atmosphere)

Dimensions in ft

1-FLG Max. Width 19' 8" / 19' 8"

Max. Height 19' 8" / 19' 8"

Other formats available on request.

Sheet thickness

4"

Temperature range

Normal temperature up to 33.8°F

Heating

-

Model

Stainless steel

Stainless steel V2A (1.4301), V4A (1.4404) to EN 10088-2
Circular matted finish, grounded, SM linen, mill finished (2B)

Galvanized sheet steel

Strip galvanized, quality class Z275,
corrosion protection class III according to DIN EN 10169/10143,
polyester coating 25µm
Industrial colors according to Cool-Tek color table

Suspension

Hygienic tube track, polished,
stainless steel V2A roller holder

Windows

Gas-tight special window, rectangular
ISO double-glazed lockable with emergency release

Seals

Side seal

Vulcanized double hollow chamber seal

Bottom seal

Vulcanized double hollow chamber seal

Fittings

Cool-Tek steel lever handle 2020

Cool-Tek special locking system

Options Door leaf / Frame

Frame

Technical details

Installation panels

Clamp frame installation

Fig. 1.1

Threshold

Fig. 1.2

Technical details

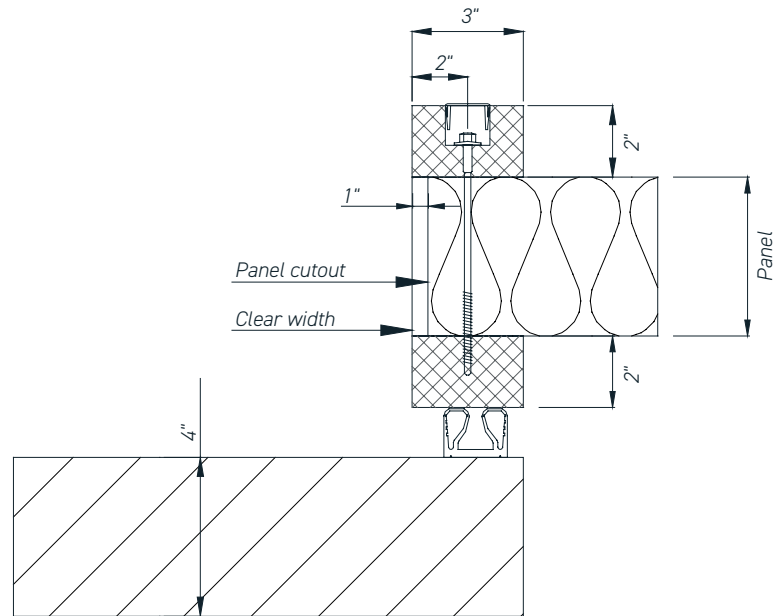


Fig. 1.1 Panel / Clamp frame

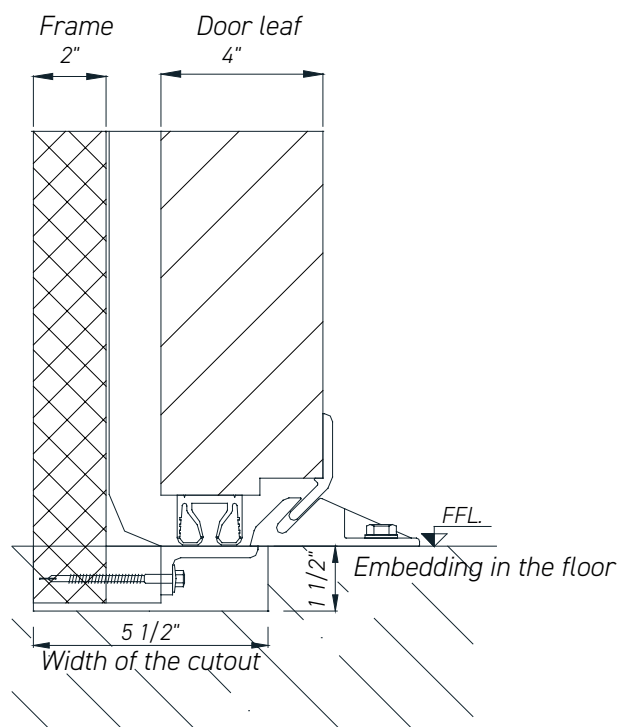


Fig. 1.2 Threshold installation